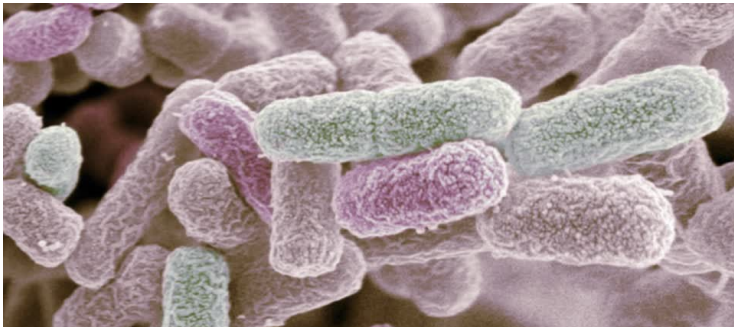
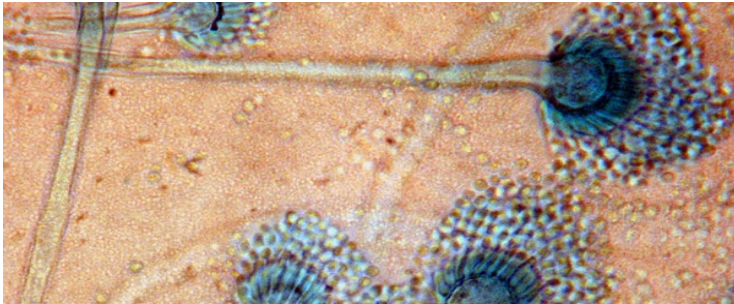




Patented Sole- and Tire Cleaning System for  
**sensitive areas**

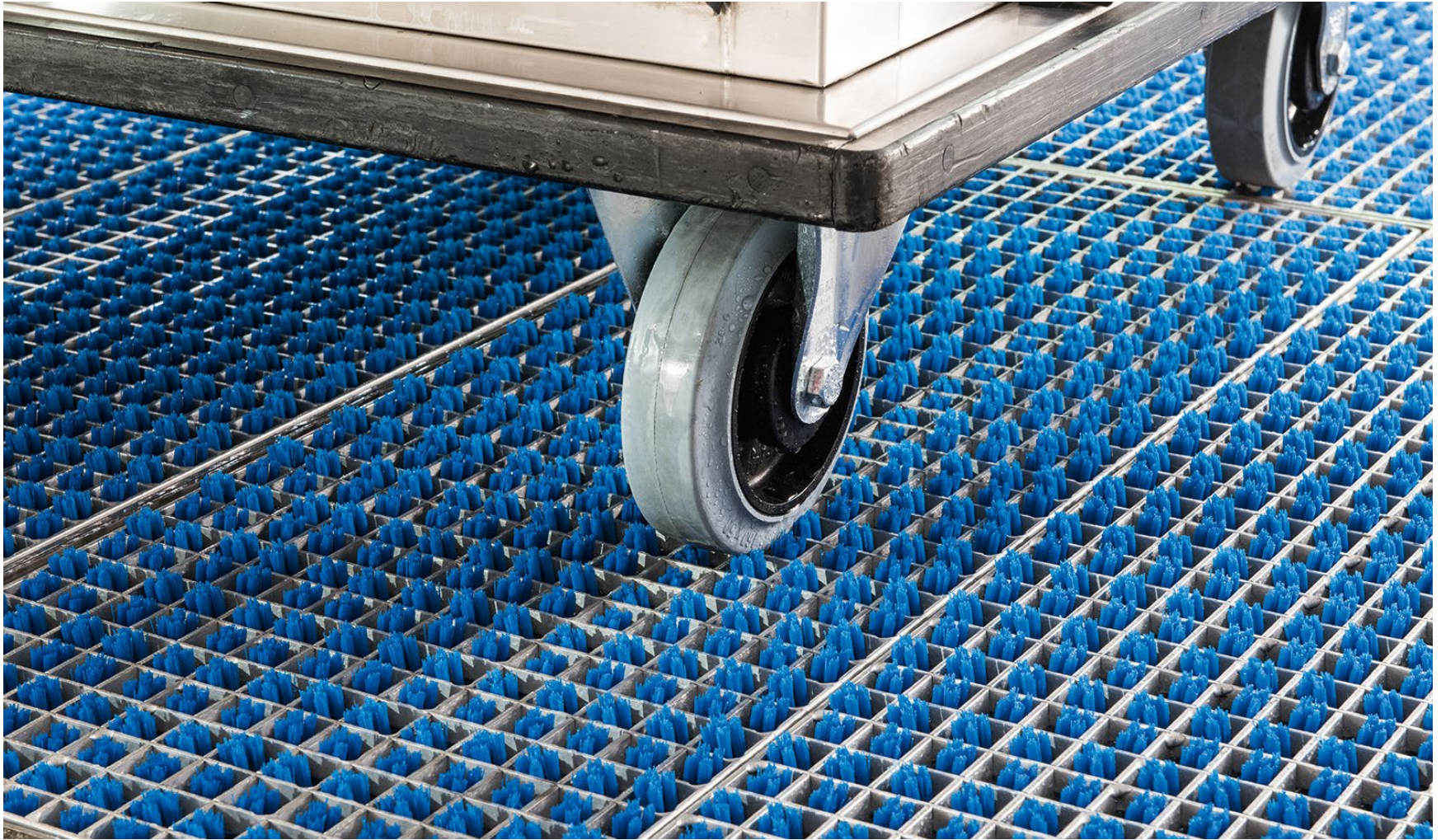
# The Problem...



- dirt ingress into hygienic areas by tires and wheels of transport trolleys and by shoe soles of the employees
- strict regulations in accordance with the hygiene guidelines of HACCP, IFS, BRC etc. need to be complied with in order to guarantee food safety



# ...the Solution!





# The Principle

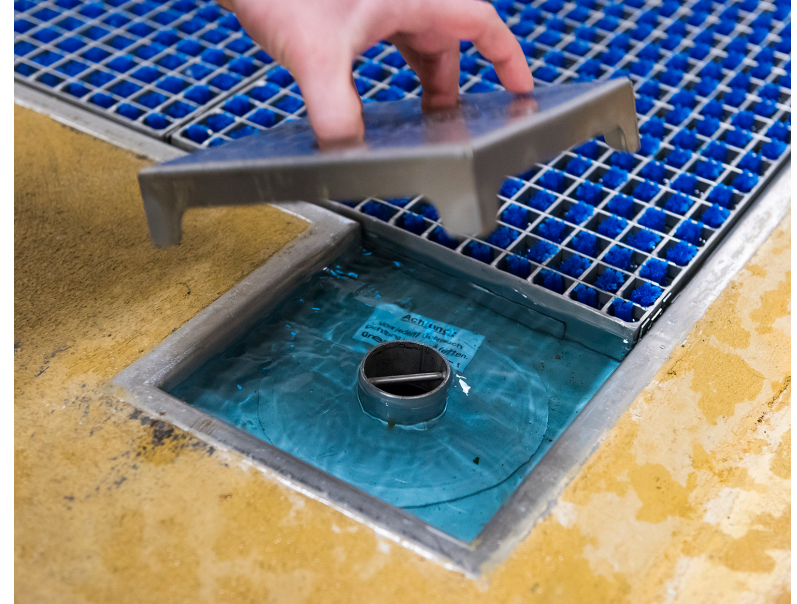


The ProfilGate®  
Video is available here:



# The Advantages

- improved hygiene
- tire treads are purely mechanical cleaned and disinfected in only one process
- high efficiency
- patented brush strips with slanted bristles
- long durability
- easy maintenance





# Proven Effectiveness – Wet Cleaning



Scientific analysis of  
microbiological effectiveness  
using RODAC plates  
and swab test

# Proven Effectiveness – Test Results

		Rollers After application of MO + drying	Soles After application of MO + drying	Rollers After driving over the fields	Soles After passing the fields	Reduction
E. coli	RODAC – plate	Lawn/ 25 cm <sup>2</sup>		141 cfu/ 25 cm <sup>2</sup>		Significant reduction
	Swab	ca. 10 <sup>5</sup> cfu/ml *	ca. 10 <sup>5</sup> cfu/ml *	ca. 10 <sup>3</sup> cfu/ml *	ca. 10 <sup>3</sup> cfu/ml *	2log <sub>10</sub> -Steps = 99%
Enterococcus faecium	RODAC - plate	Lawn/ 25 cm <sup>2</sup>	Lawn/ 25 cm <sup>2</sup>	46 cfu/ 25 cm <sup>2</sup>	60 cfu/ 25 cm <sup>2</sup>	Significant reduction
	Swab	ca. 10 <sup>6</sup> cfu/ml *	ca. 10 <sup>5</sup> cfu/ml *	ca. 10 <sup>4</sup> cfu/ml *	ca. 10 <sup>3</sup> cfu/ml *	2log <sub>10</sub> -Steps = 99%
Aspergillus niger	Swab	ca. 10 <sup>4</sup> cfu/ml *	Not tested	ca. 10 <sup>3</sup> cfu/ml *	Not tested	1log <sub>10</sub> -Steps = 90%

Lawn: proliferation of nutrient agar by microorganisms (MO) (more than 1000 germs per plate)

cfu: colony forming unit

\* ca.: This is a semi-quantitative method.

# Typical Applications





# When is the application worthwhile?



- in cases where strict hygiene requirements must be complied with
- in cases where there is a high risk of germ transmission
- in cases where in-house cleanliness is indispensable
- when a company is certified in accordance with hygiene guidelines such as IFS or BRC

# References







## **HEUTE Maschinenfabrik GmbH & Co. KG**

Höhscheider Weg 37  
42699 Solingen  
Germany  
Phone: +49 212 380 31 28

## **HEUTE Inc.**

7804 C Fairview Road, Suite 339C  
Charlotte, NC 28226  
Phone: +1 310 200 1156

[info@profilgate.com](mailto:info@profilgate.com)  
[www.profilgate.com](http://www.profilgate.com)

a product of

